

the  
saddler

£2.00



Official Matchday Magazine of Walsall F.C.



Club Sponsor  
**BANKS'S**

Match Sponsors  
**WALSALL FOOTBALL  
SUPPORTERS CLUB**






Matchball Sponsor  
**SGP COMMERCIALS**

**WALSALL**  
*versus*  
**SWINDON  
TOWN**

Monday,  
1st January 2001  
Kick-off: 3.00pm

Nationwide League Division Two



OR  ORIGINAL  
QUA  LITY  
T  IMELESS  
UN  IQUE  
UN  SPOILT

**BANKS'S**

*Original*

## PLAYER'S POT-POURRI



Recent arrival, Ronnie Ekelund takes the five-minute Saddler grilling....

**Who was your boyhood footballing hero?**

That would have to be Michael Laudrup, a great player who I met when I was at Barcelona and we played in a couple of games together.

**Team supported as a youngster?**

Brøndby, a Danish top flight side and the biggest local team near my home.

**Local and junior teams?**

Glostrup, a small team in the town where I was born. I played for them until I was 13 and then joined Brøndby.

**Most memorable moment in the game before turning pro?**

A season when my team Glostrup hit 127 goals and I scored 98 of them and was named Player of the Year.

**Besides football, do you excel in anything else?**

I like pool, snooker and golf.

**Most prized possession at home?**

My family - fiancée Claire and ten week-old baby Claudia.

**If you could be anyone for a day, who would it be?**

American golfer Tiger Woods, because of his wonderful lifestyle and massive achievements, though it must have meant a lot of hard work.

**Which non-footballing personality do you most admire?**

Snooker star Stephen Hendry.

**What type of music are you into?**

All sorts of music.

**Three words to describe yourself?**

Generous, impatient, perfectionist.

# manager's corner

## Ray Graydon welcomes in the New Year....

Good afternoon ladies and gentlemen and welcome to Bescot Stadium as we kick off 2001 with an important home fixture against Swindon Town.

I would like to take this opportunity to welcome everyone connected with our opponents who has made the trip for this New Years Day clash, particularly my counterpart, Andy King who has been recently appointed into the hot-seat following Colin Todd's departure and is currently working extremely hard to revive the fortunes of a club who have continued to struggle following last season's relegation.

### Proud

One glance at the League table will tell you that of the three clubs relegated from Division One at the end of last season, Port Vale are also locked in a battle against relegation, whilst we find ourselves at the opposite end of the table. Despite what some people seem to think it is never easy to bounce back the season after relegation, that is why I am so proud of my players efforts so far, however, like the rest of you, I have been left frustrated and disappointed by our recent away performances.

Due to Christmas printing deadlines, these notes are being penned just before we travel to face Oldham, however the Boxing Day game at Swansea was a classic example where we went into the match against lowly opposition on the

back of a good home win and even

though we carved out an early lead for

ourselves and looked the better side for much of the game, our display still followed

a similar pattern to the previous four away games and we came home pointless. With so many matches in a relatively short space of time over the festive period, I have made sure that my squad system has been used to its fullest capacity, with a number of changes made to the line-up. Sadly the outcome has been the same, with scoring chances not taken and poor defending costing us dear, particularly at Swansea where I was far from happy to see us concede two goals from set-pieces.

### Working Hard

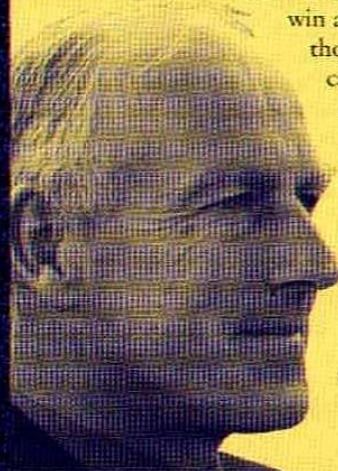
Obviously I have been working hard on the training ground in a bid to resolve this, and the players' response has been pleasing, but they have not done the business when it matters most and the outcome of our work has not been satisfactory.

As we enter the New Year I realise that maybe the personnel needs to change slightly and to that end I will be looking to bring in new players in the weeks ahead as I attempt to increase our options and revitalise the side somewhat.

I hope that you all had a good Christmas and New Year, and aren't feeling the effects of last night too much as we require your tremendous vocal backing now more than ever in a bid to maintain our solid home form which is becoming more and more important to our promotion aspirations as each game passes.

Thank you for your support this afternoon and I will look forward to seeing you all back here for our FA Cup tie with West Ham United on Saturday.

Best Wishes,



# bescot beat

all the latest Club news with Roy Whalley



**THE DIRECTORS, MANAGEMENT, PLAYERS AND STAFF AT WALSALL FOOTBALL CLUB WISH SUPPORTERS AND THEIR FAMILIES A HAPPY AND PROSPEROUS NEW YEAR.**

## A Year of Promise

What is every Walsall supporter's wish on this first day of the New Year?

There can be no doubt – promotion to the first division, that has to be our paramount objective, spiced hopefully by a giant-killing FA Cup victory over West Ham United.

It will be very tough with the likes of Wigan, Millwall, Reading, Rotherham, Stoke and Bristol City equally as determined as ourselves. However, as we start the second half of the season, I am still to see a second division side that is superior to ourselves. We have a very talented group of players, arguably the best we have ever had, and they work together as a very effective team. If we can maintain the standards of the first half of the season we will take some stopping.

## The Hammers here on Saturday

There will be a number of shocks in Saturday's FA Cup third round, and let us hope that one of them involves ourselves.

We have not yet managed a major FA Cup shock at Bescot Stadium, and it is about time that situation changed.... Perhaps Saturday will be our day.

Since these notes had to be written earlier than normal due to Christmas printing deadlines, I cannot be precise

about the availability of tickets. However, providing that tickets are still available, they can be purchased from The Football Shop in Walsall Town Centre during the remainder of the week, and the Bescot Stadium Ticket Office on Thursday and Friday.

A bumper crowd is certain, and that will provide an atmosphere that may well inspire our lads to a match-winning performance that will grab the headlines in the Sunday morning newspapers.

## Walsall feature in 'Local Heroes' Football Exhibition

The Museum of Cannock Chase is currently running a 'Local Heroes' football exhibition which tells the story of the beginnings of football in Britain.

Visitors can read about the history of local football teams, including Walsall, with a variety of items and photographs on display.

There is also a large table football game where visitors are encouraged to challenge their family and friends to a match!

The exhibition will run until January 26th, admission is free and the museum is open, Monday to Friday, from 11.00am until 4.00pm. There will be two special Sunday openings on January 14th and 21st.

For further information please contact The Museum of Cannock Chase on 01543-877 666.

## 50/50 Draw

Results of the 50/50 Matchday Draw at the game

against Cambridge United on Saturday, December 23rd will be given in this Saturday's Matchday Programme.

The competition continues today. Tickets are £1.00p each and will be on sale both inside and outside the stadium before the game. Results will be announced at half-time, and winnings can be collected from the Reception Office immediately after today's game.

## Cut price ticket deal for LDV Vans Trophy game

We have been given a home draw in the LDV Vans Trophy second round against either Wigan Athletic or Oldham Athletic, who play their first round tie on Tuesday, January 9th.

Therefore, the winners will travel to Bescot on Tuesday, January 16th (kick-off 7.45pm), a week later than originally scheduled.

Admission prices for this game have been slashed to £5.00p (adults) and just £1.00p (juniors and senior citizens) for all areas of the ground. Tickets for the tie are now on sale.

There has to be a definite outcome on the evening as there are no replays in this competition, so, if necessary, there can be extra-time – with the 'golden goal' rule coming into force – and ultimately a penalty shoot-out.

## 'Match of the Day' cameras here on Saturday

Supporters will notice the considerable presence of BBC staff when they attend Saturday's FA Cup tie.

The reason is that the Walsall v West Ham United fixture will be one of the games featured on BBC's 'Match of the Day', with Barry Davies commentating.

## Sky TV cameras here again for Rotherham game

We should have been playing Rotherham United in a crucial promotion fixture on Friday, however due to FA Cup commitments that match has had to be postponed.

The new date for the fixture is Tuesday, January 23rd (kick-off 7.45pm) and I can confirm that the match will be featured live on Sky TV.

You will recall that the live TV coverage of the Barnet FA Cup tie at the start of last month led to us having an attendance of just under 3,700. The result was a distinct lack of atmosphere inside the stadium.

This is detrimental to our own team, who tend to be lifted by the 'big occasion'.

We do not want that to happen again. It is important for us to have a big attendance for the Rotherham game, which will be crucial to our promotion hopes, who will generate the 'buzz' inside the stadium that our players thrive on.

For that reason, in order to encourage a big attendance, admission prices are being substantially reduced:

- GILBERT ALSOP STAND - £6.00p (adults), £3.00p (juniors / OAP's).
- H. L. FELLOWS STAND - £10.00p (adults), £7.00p (juniors / OAP's – in Block's J, K, Q and R only).
- BANKS'S STAND – Family Ticket (1 adult / 1 junior) £10.00p, Additional Adults £10.00p, Additional Juniors £3.00p.

Tickets are now on sale for this game.

I understand that by lowering the admission prices for League matches the club runs the risk of upsetting season-ticket holders. All I can say is that season-ticket prices include the equivalent of four

free home games, so there is still a financial advantage in having a season-ticket. I would also argue that most season-ticket holders will understand the club's reasoning at making this decision, and will enjoy being part of a good size crowd, rather than a sparse one.

### **Farewell to Derek Trevis**

I remember Derek Trevis as a player who always played very well against us. I can recall him playing for Colchester United, and thinking that he would do a good job for The Saddlers.

When we did sign him in 1968 I was delighted. Derek was a strong-tackling wing-half, who had a real presence on the field, and that made him an ideal captain.

He came at a difficult time for the club, when we were undergoing a period of financial crisis, and that was reflected in our mediocre playing record during 1969/70 when Derek left us for Lincoln City.

Nevertheless he was a good professional and a whole-hearted performer. Eventually he emigrated to America, and it was very sad to learn of his untimely death during December at the age of 58.

The club wishes to extend its sympathy to Derek's family and friends on their sad loss.

### **Sunday Market back in operation this week**

The Bescot Stadium Sunday Market, which took a rest on New Years Eve, will be back in operation this Sunday, January 7th, and every Sunday throughout the year.

### **Bescot Stadium speaks to the World**

The match against Cambridge United on Saturday, December 23rd marked the inauguration of our match commentary service via the Official Walsall FC Web-site - [www.saddlers.co.uk](http://www.saddlers.co.uk)

This means that as well as local supporters who cannot

get to the match, exiled Walsallians throughout the World will be able to follow Saddlers matches kick-by-kick as a result of our own commentary service.

You can imagine that the setting up of this service has required a capital cost, and a lot of technical expertise. We are indebted to Walsall Invest for sponsoring the project. Walsall Invest is a body that has been set up to encourage companies to re-locate to Walsall, as well as helping local companies to expand. Hopefully their involvement in our international commentary service will help to promote the 'Walsall' brand name throughout the globe.

We are also grateful to Tim Beech, Sports Editor of BBC Radio WM, and his colleagues for their involvement. It will be BBC Radio WM staff providing the commentaries, with Andrew Dawkins commenting against Cambridge United, Tim Beech at Swansea and Matt Lee who did the honours at Oldham last Saturday.

Finally, my thanks to Tony Bonser, the man who has co-ordinated the operation, without whose expertise, enthusiasm and determination this service would not have happened, and to Steve Blake who has promoted this idea for the past couple of years.

### **A Warm Welcome to our Match Sponsors - Walsall Football Supporters Club**

On this opening day of the New Year we are delighted to welcome Walsall Football Supporters Club as our Match Sponsors.

The Walsall Football Supporters Club have been providing Walsall FC with financial assistance since the late 1940's. Indeed, without their help there have been times during the past 50 plus years that Walsall FC would have gone out of business. That is the measure of the importance of the role that the Supporters Club have played.

Today, the working relationship between the Supporters Club and Walsall

FC is excellent. They continue to make significant donations to Walsall FC funds and support our commercial activities.

In addition, Saddlers Club General Manager, Mick Evans works closely with our Director of Conference and Banqueting Services, Carol Deakin, to ensure that maximum usage is made of the hospitality facilities on the Bescot Stadium site.

I am also very grateful to Royston Randle, Donald Martin, Malcolm Baker and Bob Sadler for their support in forming the Supporters Liaison Committee that seeks to ensure a line of communication between the football club and our supporters.

We are very grateful to Chairman, Brian Instone and his committee for the support they give to us, and hope they have an enjoyable afternoon.

### **A Warm Welcome to our Matchball Sponsors - SGP Commercial**

Today we welcome Steve Platt and his guests from SGP Commercial as our Matchball Sponsors.

SGP Commercial Vehicle Repairs are situated at 48 - 50 High Road, Short Heath, Willenhall, and Steve can be contacted on 01902-605 656.

Steve's main sporting connection is amateur boxing, and he plays a very important role as a patron of the Pleck Amateur Boxing Club, supporting all of their boxing shows.

However, he is also a keen Saddlers supporter, and regularly supports our commercial activities. We thank him for his support, and hope that his party has a pleasant afternoon with us at Bescot Stadium.

Thank you for your support. Enjoy the game....

*Roy Whalley*

## **Walsall Football Club Limited**

Bescot Stadium  
Bescot Crescent, Walsall  
West Midlands WS1 4SA

**TELEPHONE:** 01922-622 791

**FAX:** 01922-613 202

<http://www.saddlers.co.uk>

**EMAIL:** [wfc@saddlers.co.uk](mailto:wfc@saddlers.co.uk)

### **PRESIDENT:**

B.S. Blower MBE

### **HONORARY LIFE PRESIDENTS:**

E.F.N. Lloyd BEM

A.N. Richards

### **BOARD OF DIRECTORS:**

M.N. Lloyd (Chairman)

J.W. Bonser, R.E. Tisdale, C. Welch

K.R. Whalley (Company Secretary)

### **EXECUTIVE BOARD:**

K.R. Whalley BA, MEd

(Chief Executive and Commercial Director)

K. Avery (Director of Finance)

P. Taylor (Director of Football)

C. Deakin (Director of Conferences

& Banqueting Services)

**TEAM MANAGER:** R. Graydon

**YOUTH TEAM MANAGER:** M. Halsall

**YOUTH DEVELOPMENT OFFICER:**

B. Jones

**CENTRE OF EXCELLENCE DIRECTOR:**

J. Kerr

**PHYSIOTHERAPIST:** D. Russell Dip Sts,

FA Dip, Dip Phys Ed, FA UEFA (A), Dip NMSI

**STADIUM MANAGER:** R. Johnson

**STADIUM SAFETY OFFICER:**

G. Wilson

**COMMUNITY LIAISON OFFICER**

**AND FAMILY CO-ORDINATOR:**

M. Kearns

**CLUB DOCTOR:** Dr. G. Deacon

**CLUB CHAPLAIN:** Rev. M. Butt



**PROGRAMME PRODUCED & PUBLISHED BY:**

Morganprint

(part of MCH Printing Group 020 8293 9386)

**PROGRAMME EDITOR:**

Andrew Poole

**PROGRAMME DESIGN:**

[www.thepowerstation.com](http://www.thepowerstation.com)

The views expressed in this publication are not necessarily those of Walsall Football Club or the publisher, unless stated. No editorial or photographs can be reproduced or copied in part or full without written authority from Walsall Football Club or the publisher.

If you've been turned down for a mortgage for one of these reasons, it could be you're talking to the wrong people.

you have no wage slips

you work for yourself but don't yet have accounts

your salary is made up of commission and bonuses

you're a company director

Call 0845 950 1500 (local rate)

now quoting code AFAS0  
or visit our website @ [www.ucbhomeloans.co.uk](http://www.ucbhomeloans.co.uk)

WRITTEN QUOTATIONS AVAILABLE ON REQUEST.  
Security will be required on property.

YOUR HOME IS AT RISK IF YOU DO NOT KEEP UP REPAYMENTS ON A MORTGAGE OR OTHER LOAN SECURED ON IT.

UCB Home Loans Corporation Limited is a wholly owned subsidiary of Nationwide Building Society.  
UCB Home Loans Corporation Limited. Regd. No 1063539. Registered in England. Registered Office: 36 Sutton Court Road, Sutton, Surrey SM1 4TE. UCB Home Loans operates within the guidelines of The Mortgage Code.



The specialist mortgage lender  
of Nationwide Building Society

## There's a brand new team at the heart of English football.

Football and the Government have teamed up in a new partnership to provide new lifeblood for the grass roots of English football – pumping financial support into the game that's so close to the hearts of so many. From parks pitches to professional football clubs, we'll be there to help everyone who loves football, providing a new generation of facilities for all



by pooling resources from The FA Premier League, The Football Association, Sport England and the Government into a single substantial fund for redistribution throughout the game. Together, we intend to ensure that football enjoys a healthy future for many generations to come.



### Football Foundation

football's biggest supporter

1 Waterhouse Square, 138-142 Holborn, London EC1N 2ST.

T: (020) 7832 0100 F: (020) 7832 0119

E: [enquiries@footballfoundation.org.uk](mailto:enquiries@footballfoundation.org.uk)

W: [www.footballfoundation.org.uk](http://www.footballfoundation.org.uk)





# swifty's chit-chat



Mick Kearns  
(Community Liaison Officer)

Hi there. How ya doin'?

May I wish each and every one of you a very happy and prosperous New Year.

I hope that you all had a pleasant and enjoyable Christmas with Santa bringing everything that you wanted.

This afternoon we will be looking to start the year as we mean to go on by claiming the three points on offer against a side that we beat 4-1 earlier in the season.

See ya next time!



Car supplied by ALDRIDGE  
ACCIDENT & REPAIR

## CHRISTMAS JOY!

Just before Christmas I accompanied the manager and players to the Little Bloxwich Day Hospice and Pinfold Centre, which is also in Bloxwich.

It gave us all a great amount of pleasure to see the faces of everybody at both places when we arrived and it was nice to see both Ray Graydon and the players spend so much time talking, having their photographs taken and signing autographs.

In the modern climate, players are often portrayed as greedy and uncaring but on that day, and so many others throughout the year, that fact was disproved.

## ON BALL BOY DUTY

The ball boys for this afternoon's game are being provided by the tenth Walsall St. Martins Cub Pack. I hope that everyone involved has a very pleasant and memorable day with us here at Bescot Stadium.

## LOOKING AHEAD TO 2001....

The year 2000 proved to be another successful one for the Community Team, with plenty going on. I would like to think that we can continue this development throughout the year ahead and make it another year to remember for everyone involved.

**RAILTRACK**

• Together Keeping Kids Safe •

## Swifty's Lucky 7

Swifty puts members of The Junior Saddlers under the spotlight...



- Name**  
Danny Hayfield
- Age**  
10
- School:**  
Lodge Farm
- Favourite Walsall Player:**  
James Walker
- Favourite TV Show:**  
Pokemon
- Favourite Pop Star/Group**  
Eminem
- Favourite food:**  
McDonalds



CALDMORE AREA  
HOUSING  
ASSOCIATION

BACKING OUR BALLBOYS

## junior saddlers gallery

HAPPY BIRTHDAY:



Jack Norrie (14)



Christopher Wall (8)



Ben Hathaway (12)



Thomas Carrington (10)



James Heaton (15)



Jon Heaton (15)



We had two Junior Saddlers members on the pitch prior to our FA Cup game against Barnet last month to receive signed Walsall FC footballs as part of a Birthday Treat. Jarge Leitao was on hand to present Hassan Ali with his ball, whilst strike partner, Darren Byfield did the honours for Jack Smith.



INTERNET BANKING

 Nationwide






## If your Internet current account overcharges for overdrafts - it's archaic

Discover a Nationwide Internet current account and you'll never be cursed with bank charges again.

We don't charge for day to day services, for arranging an overdraft, or to use 500,000 cash machines worldwide. We don't over charge for overdrafts and you'll earn ten times more interest on credit balances than you'll get from most of the banks. You can even choose the way you bank with us - from Internet, branch and telephone banking.

So, leave your bank dead and buried, and get in touch today.

**That's why it pays to decide Nationwide**

 [www.nationwide.co.uk](http://www.nationwide.co.uk) |  0500 30 20 10 |  or just call in

Banking

Credit Card

Insurance

Investments

Loans

Mortgages

Pensions

Savings

YOU MUST BE 16 OR OVER TO APPLY FOR A FLEXACCOUNT (NATIONWIDE'S CURRENT ACCOUNT). THE OPENING OF A FLEXACCOUNT AND THE PROVISION OF CERTAIN FACILITIES IS SUBJECT TO AN APPRAISAL OF YOUR FINANCIAL STANDING. OVERDRAFTS, DEBIT CARDS AND CHEQUE GUARANTEE CARDS ARE ONLY AVAILABLE TO THOSE AGED 18 OR OVER. OVERDRAFTS ARE REPAYABLE ON DEMAND. FEES MAY BE PAYABLE FOR OVERDRAFTS NOT PREVIOUSLY AGREED BY US. WRITTEN QUOTATIONS FOR CREDIT FACILITIES ARE AVAILABLE ON REQUEST. NATIONWIDE WILL NOT CHARGE MEMBERS FOR USING CASH MACHINES BUT THE MACHINE PROVIDER MAY MAKE CHARGES OVER WHICH WE HAVE NO CONTROL. YOUR PC MUST MEET A MINIMUM SPECIFICATION FOR ONLINE BANKING. NATIONWIDE IS A MEMBER OF THE BUILDING SOCIETIES OMBUDSMAN SCHEME, INVESTOR PROTECTION SCHEME AND SUBSCRIBES TO THE BANKING AND MORTGAGE CODES. CALLS MAY BE RECORDED. RATES AND INFORMATION CORRECT AT 1/10/2000.



# commercial break

## NEW YEAR CABARET SEASON

The Bonser Suite at Bescot Stadium is now firmly established as the West Midlands' number one entertainment venue.

Just look at what is lined up for the early months of this year....

- Friday, February 9th – The World's best touring big band, The Syd Lawrence Orchestra and Singers, pay their tribute to the big bands – Tickets are £15.00p or £27.00p to include a four-course meal.
- Saturday, February 17th – The American Drifters – Tickets are £12.50p or £25.00p to include a four-course meal.
- Friday, March 2nd – Tribute to John Lennon, featuring Gary Gibson as John Lennon – Tickets are £10.00p or £20.00p to include a four-course meal.
- Friday, March 23rd – Black Country Laughter Show with Lizzie Wiggins, Tommy Munden and Maggie O'Hara – Tickets are £10.00p or £20.00p to include a four-course meal.
- Friday, April 6th – The Sinatra Years. 'Old blue eyes' may have gone but his music remains. Featuring Phil Fryer and his band – Tickets are £10.00p or £20.00p to include a four-course meal.

Reservations can be made at Bescot Stadium, The Football Shop in Walsall Town Centre or by telephone, with credit card, on 01922-651 414 or 01922-651 416.

## CELEBRITY STARS LINED UP FOR BESCOT

Our Sporting Dinner programme, now into its 10th year, remains as popular as ever.

Just look at who is booked for the early months of the year....

- Thursday, January 25th – England's greatest goalscorer of all-time, the legendary Jimmy Greaves, with comedian Mike Kelly – Tickets £27.50p.
- Thursday, February 22nd – Former Walsall, Leeds United and England striker, Allan Clarke tops the bill with one of the great entertainers of modern football, Frank Worthington, plus comedian Don Reid – Tickets £27.50p.
- Thursday, March 29th – Former Leeds United star, member of the 1966 England World Cup-winning team and Republic of Ireland manager, Jack Charlton OBE, with comedian Mick Walker – Tickets £30.00p.

All ticket prices include a delicious five-course meal. Reservations can be made by telephone, with credit card, on 01922-651 414 or 01922-651 416.

## LIVE BOXING AT BESCOT

Working alongside Pleck Amateur Boxing Club, we stage four Amateur Boxing Dinner Shows per year. In 2001 all will include a five-course meal, a comedian and a minimum of ten bouts.

The first two shows of the year will take place on Thursday, February 8th and Thursday, May 17th, and reservations can be made by telephone, with credit card, on 01922-651 416.

## MATCHDAY PACKAGES FOR WEST HAM CUP TIE

Why not make Saturday's home FA Cup clash with West Ham United a really special occasion?

For just £50.00p you can have car parking, a four-course pre-match carvery meal, matchday programme, centre stand seats, half-time refreshments, access to licensed bar facilities and the chance to meet the players after the game.

Interested? Please call either 01922-651 414 or 01922-651 416, with credit card, for reservations.

## A CHRISTMAS PRESENT WINNER – THE STORY OF WALSALL FC BY GEOFF ALLMAN

The most popular Christmas present in Walsall? One of the contenders must be the new 128-page publication, 'The Story of Walsall FC' by matchday programme contributor, Geoff Allman, which has been selling like the proverbial 'hot cakes' from The Football Shop in Walsall Town Centre, at just £9.99p per copy. Fully illustrated, it provides an entertaining and informative narrative of Walsall Football Club from its beginnings to the present day. A must for every Saddlers supporter, copies are available from The Football Shop.

## PRESENTATION TIME

We were delighted to welcome LSD Promotions as our Match Sponsors for the FA Cup second round tie against Barnet. LSD Promotions have strong links with the club as they run our highly successful Sunday Market, and here we see their guests receiving a signed Walsall FC football from Paul Hall (picture A).

Over in The Swifts Club, Andy Tillson was more than happy to receive his Man of the Match prize of a crate of Banks's, which he used to help celebrate scoring his first two goals for the club (picture B).

One of our two mascots for the evening, Jacob Jenkins, is seen here with one of his Saddlers heroes, Paul Hall (picture C).

And finally, Steve Evans, Linda McIllicuddy and Dermot McIllicuddy of LSD Promotions were on hand to present Paul Hall with his Match Sponsors' Man of the Match award (picture D).



# waiting in the wings



## Avon Insurance League Division One AS AT 21/12/00

	P	W	D	L	F	A	Pts
WALSALL	11	7	2	2	17	10	23
Shrewsbury Town	9	6	2	1	21	11	20
Sheffield United	10	6	1	3	16	10	19
Wrexham	11	6	1	4	20	16	19
York City	10	5	2	3	18	9	17
Blackpool	11	4	1	6	13	18	13
Wigan Athletic	11	4	1	6	13	20	13
Stoke City	10	3	3	4	11	14	12
Darlington	9	4	0	5	8	15	12
Grimsby Town	10	3	2	5	8	13	11
Scunthorpe United	11	1	4	6	17	24	7
Lincoln City	9	1	3	5	19	21	6

## AVON INSURANCE LEAGUE 2000/2001 FIXTURES



Date	Opponents	F-A
Wed 16/8/00	York City (away)	1-1
Wed 30/8/00	Wigan Athletic (away)	3-2
Wed 6/9/00	Wrexham (away)	1-0
Wed 20/9/00	Lincoln City (home)	2-1
Wed 4/10/00	Blackpool (home)	2-0
Wed 11/10/00	Scunthorpe United (away)	1-4
Wed 25/10/00	Shrewsbury Town (away)	0-1
Wed 8/11/00	Grimsby Town (home)	1-1
Wed 15/11/00	Darlington (home)	3-0
Mon 20/11/00	Stoke City (away)	1-0
Wed 6/12/00	Sheffield United (home)	2-0
Wed 10/1/01	Wigan Athletic (home)	
Wed 24/1/01	Sheffield United (away)	
Wed 7/2/01	Wrexham (home)	
Wed 14/2/01	Lincoln City (away)	
Wed 28/2/01	Blackpool (away)	
Wed 14/3/01	Scunthorpe United (home)	
Wed 28/3/01	Grimsby Town (away)	
Wed 11/4/01	Shrewsbury Town (home)	
Wed 18/4/01	Stoke City (home)	
Wed 25/4/01	Darlington (away)	
TBA	York City (home)	

All matches kick-off at 2.00pm and for the remainder of the season, home games will be played at the Victoria Ground, home of Bromsgrove Rovers FC. Admission is free.

on the verge

NAME: Nick Smith  
DATE OF BIRTH: 5/10/82  
POSITION: Midfielder  
RESERVE TEAM  
APPEARANCES: 0 (4)  
RESERVE TEAM GOALS: 0

## WALSALL FC RESERVE TEAM STATS

2000/2001 Up to and including 01/01/01

### MOST STARTING APPEARANCES

PLAYER APPS

M. Gadsby	11
D. Scott	11
M. Wright	11
G. Birch	10 (1)
C. Emberson	10
I. Roper	10

### LEADING GOALSCORERS

PLAYER GOALS

K. Hawley	4
G. Birch	3
S. Eydjolfsson	2
M. Gadsby	2

### MOST SUBSTITUTE APPEARANCES

PLAYER SUB APPS.

K. Hawley	7
N. Smith	4
J. Campbell	3
X. Barraud	3
D. Hunt	3

### YOUTH TEAM PLAYERS IN RESERVE TEAM

PLAYER APPS. GOALS

X. Barraud	0 (3)	0
A. Bishop	0 (2)	0
J. Campbell	0 (3)	0
I. Gaunt	8	1
K. Hawley	3 (7)	4
D. Hunt	4 (3)	0
E. Paschalis	0 (1)	0
N. Smith	0 (4)	0
M. Wright	11	0

### TRIALISTS

PLAYER APPS. GOALS

M. Richardson	1	0
C. Vanni	1	0

Karl Hawley – leading goalscorer for  
The Saddlers' second string.



## FOOTBALL LEAGUE YOUTH ALLIANCE 2000/2001 FIXTURES

Date	Opponents	F-A
Sat 19/8/00	Chesterfield (home)	4-1
Sat 26/8/00	Rotherham United (away)	6-1
Sat 2/9/00	Macclesfield Town (home)	3-1
Sat 9/9/00	West Bromwich Albion (away)	2-1
Sat 16/9/00	Mansfield Town (home)	2-0
Sat 23/9/00	Port Vale (away)	1-0
Sat 30/9/00	In Service Training	
Sat 7/10/00	Sheffield United (home)	3-8
Fri 13/10/00	Shrewsbury Town (home)	6-0
Sat 21/10/00	Notts County (away)	2-1
Sat 28/10/00	West Bromwich Albion (home)	1-1
Sat 18/11/00	Sheffield United (away)	3-0
Sat 25/11/00	Port Vale (home)	4-1
Sat 9/12/00	In Service Training	
Sat 16/12/00	Notts County (home)	3-0
Wed 20/12/00	Chester City (FLYA Cup)	3-1
Sat 23/12/00	Mansfield Town (away)	4-2
Sat 6/1/01	In Service Training	
Sat 13/1/01	Chesterfield (away)	
Sat 27/1/01	Rotherham United (home)	
Sat 10/2/01	Macclesfield Town (away)	
TBA	Shrewsbury Town (away)	

All matches kick-off at 11.00am unless otherwise stated. Home games are played at the Birmingham County FA Ground, Ray Hall Lane, Great Barr.

## FOOTBALL LEAGUE YOUTH ALLIANCE - CENTRAL CONFERENCE

AS AT 20/12/00

	P	W	D	L	F	A	Pts
WALSALL	13	11	1	1	40	15	34
Sheffield United	14	9	3	2	44	20	30
Notts County	14	6	3	5	35	21	21
Rotherham United	14	5	3	6	23	34	18
West Bromwich Albion	13	4	3	6	19	22	15
Macclesfield Town	12	4	3	5	17	23	15
Mansfield Town	13	4	2	7	17	24	14
Chesterfield	12	4	2	6	16	26	14
Port Vale	15	3	4	8	18	32	13
Shrewsbury Town	10	1	4	5	12	24	7

**Walsall**  
TEC Proud sponsors of the  
Walsall FC Youth team



The young Saddlers are still showing no signs of relinquishing top spot in the table after another convincing display saw Notts County, who themselves went into the game in third position, beaten by three goals to nil.

### Flying Colours

In what was yet another highly competitive and challenging match, we came through the test with flying colours, although the game wasn't as clear-cut as the final scoreline would tend to suggest as Notts County made life difficult but in the end our superior passing and movement saw us through.

All three of our goals came from Andy Bishop, who took what chances came his way in ruthless fashion. The young striker now has ten Football League Youth Alliance goals to his name, putting him just one behind strike-partner, Karl Hawley. In fact, of the 40 League goals we have scored so far this duo has bagged just over half of them.

### Good Standard

It was pleasing to see us trying to play football as often as possible, and we managed to maintain a good standard throughout the game, even though we were forced to reshuffle our pack when Elliot Paschalis, who was

playing in an unfamiliar full-back role, was forced to leave the field with a nasty looking head wound. It was a shame because Paschalis was having a good game, but all credit to the lads who listened to our instructions and put them into practice without interrupting our flow.

This kind of attitude is exactly what we are looking for and hopefully we can continue to develop in a similar vein in 2001.

Walsall: Bate, Paschalis (Smith), Teesdale, Gaunt, Hunt, Wright, Stanley, Barraud, Campbell, Bishop, Hawley. Subs: Jones, Worley, Caines.

*Mick Halsall*



*who are ya?*

**NAME:** Andrew Fitzpatrick

**DATE OF BIRTH:** 7/4/83

**POSITION:** Defender

**THE HALSALL VERDICT:** A second-year defender who favours the left-hand side, he is a Centre of Excellence product but has suffered at the hands of injury this season.

# This Season's *best* transfer!



With frequent match day trains  
getting to the game couldn't be easier

For all your local train times  
call the Centro Hotline



# touch line

Your 8-page guide to today's action



## State of Play

Setting the scene for today's game



## Déjà vu

Previous encounters with the Robins



## Great Dane

Ronnie Ekelund talks to us



## Visiting Ours

We welcome Swindon Town

# state of play

with Andy Poole

Good afternoon ladies and gentlemen and welcome to this New Years Day encounter between The Saddlers and the Robins. I hope that you have all recovered sufficiently from the excesses of last night and are fit and raring to go for the action which lies ahead over the next 90 minutes....

Somehow I think there will still be one or two hangovers amongst the support this afternoon!

For the players though there has been no such letting down of hair. A gruelling schedule of four games in just nine days has pushed them hard, on top of which they were in for training on Christmas Day and tucked up in bed nice and early last night. Footballers are

only human after all, you can argue that they get well paid for what they do, but at this time of the year the temptations are so great that it takes immense willpower and self-discipline to see them through. This is one time of the year when life as a footballer is not so glamorous!

The year 2000 provided us with a roller-coaster of emotions. We experienced so much during the past 12 months that we cannot fail to learn from what we have been through, and hopefully use it to our advantage this year.

The signs are that 2001 will see a continued development both on and off the field. Ultimately though we are all banking on it ending with us as a first division club once more, although it

appears at this stage that whether we are or not depends largely on if we can start to carve out results away from home.

Coincidentally our opponents this afternoon are Swindon Town, a team against whom we put in one of our best and most convincing away performances of the season so far when we came home with a 4-1 win back in August, but since then life on the road hasn't been so kind, culminating with a bitterly disappointing second half showing at Swansea on Boxing Day.

On home soil we have got away with picking up maximum points despite below-par performances but you cannot do this on enemy territory, and it is a lesson we must learn before it is too late. Luckily a number of other clubs who are challenging us near the top have suffered a similar fate, and it was interesting to note on Boxing Day that of the top six clubs only Millwall were victorious.

On Saturday we have the opportunity to put all of the stresses and strains of our battles in the League on the back-burner as the FA Cup rolls round once more with West Ham United our visitors. The Hammers hit a rich

vein of form over Christmas with a five-star showing against Charlton Athletic, further proof of the difficult task we will have on our hands against Messrs Di Canio and Co. Welcome to 2001!

*Come on you Saddlers!*



## Passionate about The Saddlers.

React to the action after the final whistle - call the legendary Tom Ross on 0121 683 1152.



# dêja vu

## Walsall FC Historian, Geoff Allman looks back at an inspired Saddlers showing....

Walsall 5 Swindon Town 0 – October 20th 1981

Just before the end of the previous season we had met Swindon at Fellows Park with both clubs struggling to avoid relegation. 3,429 had seen us scramble home 2-1 and in the event both clubs stayed up with just a point to spare.

How different the scene was the following season with both clubs tucked nicely into the top half of the table, with The Saddlers a point ahead of John Trollope's men. Both teams were in good form as we had beaten Portsmouth 3-1 just three days earlier and Swindon were fresh from a 4-1 success at Bristol Rovers.

Even on a wet Tuesday night, easily our highest attendance of the season made their way to Fellows Park full of hope that they would witness a thrilling battle. Scarcely could they have hoped to see such a run-away win for us. It was just one of those nights when everyone seemed to hit top form. Alan Buckley, who had netted only once in ten games up to that point, suddenly found his scoring touch in the first half with an opportunist goal followed by a calmly taken penalty.

It was 2-0 at the break and just after the restart came the goal of the game as midfielder John Loveridge, on loan from West Bromwich Albion, netted with a magnificent volley. It was then the turn of speedy winger Mark Rees to add his name to the scoresheet as he took advantage of a tiring visitors' defence to net for the first time since getting the winner against Swindon near the end of the previous season. Rees obviously enjoyed playing against the Robins as he added another goal for good measure just before the end.

Perhaps the 5-0 win flattered us as certainly Ron Green in our goal played his part with a couple of outstanding saves in the second half.

Despite it being October thoughts were already turning to promotion as the crowd left at the end. In the following matchday programme, Roy Whalley, in his 'From The Terraces' column, announced: "The Walsall Army is back on the march again." Alas it was not to be as we lost our next two games and only just scrambled clear of relegation at the end of the season on goal average. Swindon meanwhile fared even worse, winning only two further games throughout the remainder of the season and getting relegated.

Walsall: Green, Macken, Caswell, Beech, Serella, Hart, Rees, Loveridge, Penn, Buckley, Waddington (O'Kelly).

Swindon Town: Allan, Henry, Peach, Hughes, Lewis, Graham, Carter, Emmanuel, Rowland, Rideout, Williams.

Attendance: 6,010.

### THE BOY DONE WELL

Ken Satchwell was a good honest professional who rarely made the headlines. He had played for Coventry City in the late 1950's but was plucked back from Nuneaton Borough in the old Southern



Ken Satchwell – in fine form as the Robins crashed to a 5-0 defeat back in February 1966.

League in January 1965 when Bill Harrison was carrying out a massive team rebuilding programme after taking over as Chairman three months earlier.

Ken was still only 24 at the time and he had some useful games on the right flank of our attack in the latter half of the 1964/65 campaign and in the opening stages of the following season. Then he lost his place to Howard Riley and missed out on the dramatic FA Cup ties at Stoke – where we won 2-0 with ten men – and at Norwich – where we lost two late goals after holding the lead.

Allan Clarke picked up an injury in that Norwich game and so Ken was brought back into our side a week later to play as twin striker alongside George Kirby as Swindon came to town in February 1966. Just 25 seconds into the game Ken was on hand to knock the ball home after Kirby had sent Colin Taylor racing away down the left and he crossed perfectly. Time and time again we swept towards the Laundry End with Satchwell involved in almost every attack. By half-time we were three goals to the good as a cracker of a shot from Taylor was followed by an inspired run and shot from Howard Riley.

After the interval Riley notched another and then shortly afterwards a Satchwell flick was met first time by Kirby and as Peter Downsborough in the Swindon goal found his shot too hot to handle, Taylor was in the right place to complete the scoring. Rarely can the Robins' Welsh International defender Mel Nurse have had such an uncomfortable afternoon as 'Satch' gave him.

He stayed with us until the end of the following season when he was troubled by injuries and later went on to play for several more years in non-League and works football, but he never played better than in that game against Swindon Town.

Walsall: Carling, Gregg, Harris, Sissons, Bennett, Athey, Riley, Kirby, Satchwell, Summers, Taylor.

Swindon Town: Downsborough, Dawson, Trollope, Morgan, Nurse, Richardson, Henderson, Smart, East, Rogers, Weaver.

Attendance: 9,367.

# on the pitch

*in conversation with Ronnie Ekelund*



From Brøndby in Denmark to Barcelona then Southampton, Coventry City and Walsall . . . via Toulouse in France. That's the incredible journey of our latest foreign star Ronnie Ekelund.

He has played with some of the world's greatest, and now he could prove a key figure in the Walsall team hoping for an immediate return to the Nationwide first division.

At the time of writing, Ronnie's appearances for The Saddlers have mainly seen him coming off the bench, but he has showed enough on each occasion to suggest he will make an impact.

He has signed a two-month contract, initially, so that manager Ray Graydon can assess how he could fit into the system here, and for him to consider whether a longer stay would suit his future in the game.

Ronnie said: "We shall just have to wait and see what happens, but I am pleased to be here, I have settled in quite quickly, and they are a nice bunch of lads at Bescot.

"This is a good side, the team spirit is high and a lot of hard work is being put in by everyone.

"What I need to do is get in the side for 90 minutes to show what I can do. I have to wait for my chance, but I can see the quality Walsall have and the League table speaks for itself."

During his career so far, 28-year-old Ronnie has usually played 'in the hole' between midfield and the strikers, in a free role. He has also operated in midfield or as a second striker.

From what he has seen so far he feels he can fit in wherever manager Ray Graydon decides to play him, and I am sure supporters have recognised his skill in the few short appearances he has made.

## Men in Black



referee

**Mr. R. J. Beeby**  
Married with a young son, he commenced refereeing in 1988 before getting on to the National Referee's List in 1999. In his spare time he takes a very keen interest in cricket, both playing and watching.



Assistant referee

D. P. Morrison



Assistant referee

K. J. Nind

Fourth Official K. R. Ingram



**goals oncd**

The Official Sponsors of the Substitute Board

www.goals-oncd.com

Despite his impressive track record, Ronnie is a very down-to-earth character, which should help him to blend into The Saddlers' master plan.

Last season he helped Toulouse win promotion to the French top flight, playing as a defensive midfielder man. He joined them when they were seventh in the table and made around 20 appearances.

But with his fiancée, Claire, coming from Coventry, he was keen to return to England, and had just started a trial

## tale of the turf

### Walsall

Half Time Score	
Full Time Score	
Scorers	
Man of the Match	
Attendance	



with Bolton Wanderers when he broke an elbow three minutes into a friendly match.

By the time he had recovered, several Bolton players who had been injured were fit again, so he left the Reebok Stadium and was offered a short-term contract with Walsall after talks with Ray Graydon and Paul Taylor.

Ronnie said: "Ray was the youth team coach at Southampton when I was with The Saints, so we already knew each other.

"He is obviously doing a great job here, and my early impressions are that this club seems to be on the right track and definitely have an excellent chance of winning promotion this season."

Ronnie's Southampton career was ended by a back injury, but he has recovered completely from that problem.

He had a couple of months with Coventry City in 1996 when Ron Atkinson was the Sky Blues' manager, and that's when he met his wife-to-be, Claire, who was working as a fitness instructor in a local health club.

Ronnie's arrival at the club is another indication of the type of player Walsall are keen to recruit to help bring first division football back to Bescot Stadium.

By Paul Marston, Birmingham Post & Mail.

## Swindon Town

## Walsall Squad List



1 James WALKER					
2 Chris MARSH					
3 Ian BRIGHTWELL					
4 Tom BENNETT					
5 Andy TILLSON					
6 Ian ROPER					
7 Darren WRACK					
8 Darren BYFIELD					
10 Dean KEATES					
11 Brett ANGELL					
12 Ronnie EKELUND					
14 Jorge LEITAO					
15 Zigor ARANALDE					
17 Carl EMBERSON					
18 Mark WRIGHT					
19 Paul HALL					
20 Gary BIRCH					
21 Matthew GADSBY					
24 Dion SCOTT					
25 Tony BARRAS					
26 Gabor BUKRAN					
27 Pedro MATIAS					

## Swindon Town Squad List



1 Bart GRIEMINK					
2 Mark ROBINSON					
3 Sol DAVIS					
4 Matthew HEWLETT					
5 Adam WILLIS					
6 Antoine VAN DER LINDEN					
7 Keith O'HALLORAN					
8 Bobby HOWE					
10 Giuliano GRAZIOLI					
11 David DUKE					
12 Juan COBIAN					
14 Steve COWE					
15 Andy WILLIAMS					
16 Jim WHITLEY					
17 Danny INVINCIBLE					
18 Gary ALEXANDER					
21 Gareth DAVIES					
22 Alan REEVES					
23 Steve MILDENHALL					
24 Martin WILLIAMS					
26 Alan YOUNG					
31 Ian WOAN					

Key position yellow card red card substitutions goals

# visiting Ours



SWINDON  
TOWN  
F.C.

## Swindon Town

**Nickname:** the Robins

**Year Formed:** 1881

## Home Turf

**Ground:** County Ground

**Pitch Measurements:** 110yd x 70yd

**Record Attendance:** 32,000

**Previous Ground(s):** The Croft (1881-86)

## for the record

### The Saddlers' record against the Robins

#### League Record

	P	W	D	L	F	A
Home	34	16	9	9	62	31
Away	35	8	9	18	48	76
TOTAL	69	24	18	27	110	107

## BART GRIEMINK

The 6'4" Dutch goalkeeper impressed sufficiently during a two month loan spell at the club last season that he was snapped up on a permanent deal when his contract at Peterborough United came to an end during the course of the summer. A good shot-stopper, he has been a regular between the posts so far this term.

## MARK ROBINSON

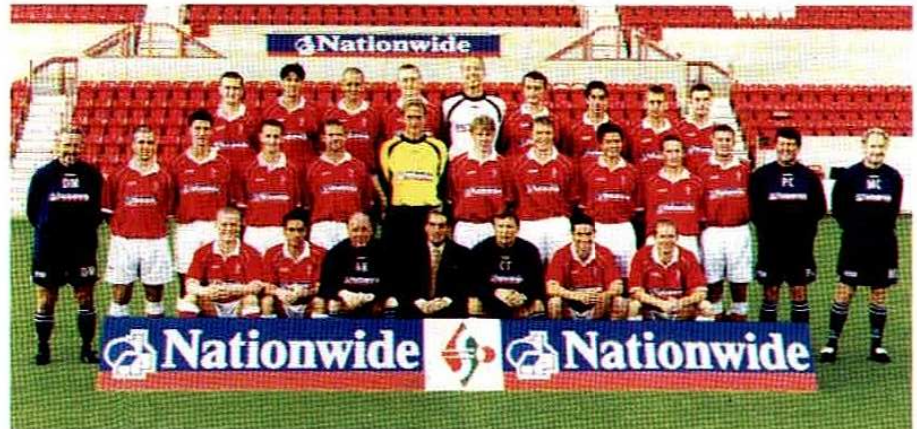


Mark Robinson

versatile and consistent performer, he is a much respected figure at the club. Began his career at West Bromwich Albion before giving service to Barnsley.

## SOL DAVIS

A left-back who progressed through the ranks at the club to make his first-team debut shortly after his 18th Birthday a couple of years ago. Weighed in with 25 appearances last term, operating in both a full-back and wing-back role and



displaying total commitment to the task at hand. A tough-tackler, his game is improving all of the time.

## ALAN REEVES

The tall central defender arrived at the club in search of regular first-team football after being in and out of the Wimbledon side for the past few seasons. A fine header of the ball, the 32 year-old can be a threat at set-pieces and has plenty of know-how.

## ANTOINE VAN DER LINDEN

A composed central defender who is comfortable on the ball, he hails from Holland and was snapped up on a free transfer from Sparta Rotterdam in the summer. A technically gifted player, he is gradually settling into the English game. Often used on the left side of the three-man central defensive unit.

## JUAN COBIAN

A talented and dynamic right-sided defender who likes nothing more than

launching attacks. He arrived in this country with Sheffield Wednesday, but opted to try his luck in Scotland with Aberdeen in November 1999 before moving south in the summer to become part of the Robins' new-look side.

## BOBBY HOWE

An attack-minded midfield battler who arrived at the club three years ago from Nottingham Forest, he was told that he could leave the club during the last pre-season after losing his place in the side but has worked extremely hard to re-establish himself in the team after being given a stay of execution.

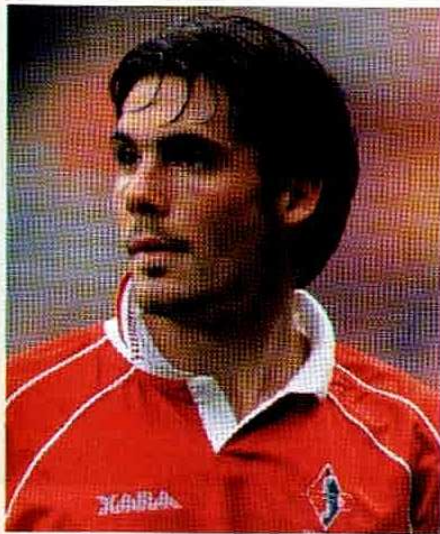
## IAN WOAN

An experienced head in the middle of the park, he has been signed on a short-term deal in a bid to bring some much-needed guidance and know-how to an otherwise young and inexperienced side. An excellent passer of the ball who also

possesses a fine crossing ability, he gave excellent service to Nottingham Forest before injuries took a hold and he spent some time with Barnsley recently.

## JIM WHITLEY

Snapped up on a two-month loan deal from Manchester City in December, the Northern Ireland International is a player of undoubted skill and ability who has struggled to command a regular place in the City line-up since their promotion into the top flight and has been allowed to link up with the Robins in a bid to get regular first-team action.



*Danny Invincible*

## LINK MAN ADRIAN VIVEASH

We look back to the comparatively recent past for today's Link Man with a player who has not only served both of today's clubs but who also left both of them at a time when many fans would have liked him to stay. Born in Swindon in 1969, just after his home-town club had won promotion from Division Three, Adrian graduated from the junior ranks to make his first-team debut for the Robins in a second division game against Middlesbrough in October 1990, going on as substitute for Alan McLoughlin and playing for most of the rest of the season either in the centre or on the left flank of defence. He was in and out of the team over the next few seasons in the course of which he had separate loan spells with Reading in January 1993 and 1995 and with Barnsley in August 1995. He also came back bravely from a broken

## DANNY INVINCIBLE

The Australian has really settled into the English game well since arriving on these shores in July. The 21 year-old attacking midfielder has weighed in with more than his fair share of goals so far this term, including one against ourselves back in August. A former Australian Under-20 International, his prowess in front of goal has seen him used more as an out-and-out striker recently.

## GARY ALEXANDER

The highly-rated 21 year-old striker cost the club £300,000 when arriving from West Ham United in early August. He spent much of last season on loan at Exeter City where he made a big impression with 16 goals in 20 appearances and saw his game develop in leaps and bounds. A powerful and hard-working front-man, he is expected to carve out a good career for himself in the game in the years ahead.

## MARTIN WILLIAMS

A popular figure at previous club, Reading, he arrived at the County Ground in search of a new challenge over the course of the summer after overcoming a niggling knee injury. Possessing plenty of strength and pace he is seen as an important member of the playing staff.

leg suffered on a summer tour of Cyprus in 1994.

It was soon after his spell with Barnsley that he came to us in October 1995. Though we went down 2-1 in his debut game at home to Wrexham, he quickly settled into the number four shirt, playing as a central defender alongside Derek Mountfield. He played in every game in 1996/97 and netted ten goals, including four in five games at one stage in mid-season. His consistency continued right to the end of last season and having missed only six games in our promotion season, he missed just three last term. Even when it seemed certain that he would be leaving in the summer he battled to the last kick of every game in a gallant but vain effort to keep us up. All in all he played in 242 games for us, scoring 16 goals! He was, of course, back at Bescot again in November as part of the Reading side beaten 2-1 as for once we were happy to see him on the losing side.



*Gary Alexander*

## DAVID DUKE

A young Scottish-born player with a great deal of potential, he arrived at the club in July from Sunderland where his path to a first-team place was blocked. Another left-sided player, he will be hoping that 2001 will be the year in which he cements a regular starting berth.

## STEVE COWE

A quick-footed and lively striker with good vision, he was on the verge of leaving the club under Jimmy Quinn's management, however, he was brought back in from the wilderness and finished last season strongly which was enough to warrant a new contract. Learned his trade at Aston Villa

## STEVE MILDENHALL

A home-grown goalkeeper who is in his fourth year as a professional after coming up through the ranks. A resolute performer who has done well at reserve team level over the past couple of seasons, he has found it difficult to cement a regular first-team place.

## at the helm

**Name: Andy King**

**Appointed: November 2000**

**Previous Five Bosses: Glenn Hoddle (1991-93), John Gorman (1993-94), Steve McMahon (1994-98), Jimmy Quinn (1998-2000), Colin Todd (2000)**

## THE SADDLERS CLUB

Bescot Stadium, Bescot Crescent,  
Walsall WS1 4SA  
Telephone: 01922-622 257.



## WALSALL SUPPORTERS – THE SADDLERS CLUB WANTS YOU!

All Walsall FC fans over the age of 18 are invited  
to join The Saddlers Club

**(Walsall Football Supporters Club)**

THE MEMBERSHIP FEE FOR NEW MEMBERS  
HAS BEEN HELD AT £8.00p

COME AND ENJOY THE EXCELLENT  
FACILITIES OF THE CLUB ON MATCHDAYS  
AND EVERY EVENING WITH:

- DISCO'S
- SHOW'S
- TOP MIDLANDS BANDS
- GOOD FOOD

THE CLUB IS ALSO AVAILABLE  
FOR PRIVATE HIRE –

For full details please contact The Saddlers Club  
Manager, Mr. M. Evans on  
01922-622 257

# where it's @

# information highway

Cyber Media  
SOLUTIONS

They say that the festive season is a time for families and as it is New Years Day, here are three of our Saddlers heroes with their nearest and dearest....

Andy Tillson has been a revelation in the very heart of our defence since arriving at Bescot Stadium over the course of the summer. He has settled into the club extremely well as has his wife Kelly and children Jordan and Danielle who we see pictured here.



There has been a recent arrival in the household of fellow defender, Ian Roper, with the birth of Scarlett. Here we see the proud parents, Ian and Danielle with their little bundle of joy.

There are no patters of tiny feet just yet for Ian Brightwell. Nevertheless here we see him with Helen whom he met on a blind date and the pair have been together ever since.... How romantic!



Cyber Media  
SOLUTIONS

- Internet consultants, • Web authors, • E-Commerce packages,
- Databases, • Domain Registration, • Internet Training.

Tel: 0121 236 063 Mobile: 07931 323 981 Email: steve@cyber-media.co.uk Web Site: www.cyber-media.co.uk

Today's article features clubs who are in the process of, or planning to, move grounds. Two sides in the British Isles who have relocation on their mind are Dumbarton and Shamrock Rovers. The Scottish third division side opened their new home, The Strathclyde Homes Stadium, at the start of last month as over 1,800 saw them entertain Elgin City. Various hold-ups, including the fuel crisis, delayed completion but it is now up and running. The Dublin side meanwhile has also had to put back their move to Sean Walsh Memorial Park in the Tallaght district. They had hoped to be in for November but are now talking about next season. The cost of the first phase of work is put at £4.2 million with a minimum of £500,000 pledged by the government.

In France, Sedan of the first division have opened the Stade Louis Dugauguez, a 17,000 capacity venue (to rise to 24,000) built directly behind the old ground. The first game against Rennes was seen by a gate of 13,366. Across in Holland, another new stadium is the 20,000-seater Parkstad Limburg Stadion which is home to Roda JC of Kerkrade. This is reported to be an attractive stadium built on an industrial estate.

In Austria, FC Tirol-Milch Innsbruck are now playing at the Tivoli Nea Stadion, a 17,000-seater venue with room for growth which was built next to the original ground.

Meanwhile up in Norway, the ever-successful Trondheim club, Rosenborg, have plans to develop their Lerkendal Stadion into a 25,000 all-seater stadium with work commencing in the spring. They could add a further 5,000 seats by filling in the corners at a later date.

Neil Morris

## WEB-SITE OF THE WEEK

[www.groundtastic.ukgateway.net](http://www.groundtastic.ukgateway.net)

If you have reached the end of this article you'll probably enjoy this site, produced by Britain's only magazine dedicated to football grounds. You need a quirky streak, but it is not uninteresting.

# Walsall Information, Advice & Guidance Network

Need up to date information on courses, training and work opportunities?

Need advice on how to access the opportunities when you have decided what you would like to do?

Need more in-depth guidance to help you reach your goal or decide on another career path?

Then contact the Walsall Information, Advice and Guidance Network - 20 organisations working towards nationally accredited standards to provide you with a first class Information Advice & Guidance service.

**Barr Beacon C.A.**  
Tel: 01922 3250466

Services: Information on Adult Education Courses in the local area.

**Biscom**  
Tel: 01922 636226

Services: A variety of free training & job search facilities for people who are over 25 and currently unemployed. Free job matching services with vacancies in local companies.

**Black & Asian Disability Group (BADG)**  
Tel: 01922 724869

Services: Specialist information on disability and stroke services, outreach service & referral to other services.

**Brownhills C.A.**  
Tel: 01543 452119

Services: Information on part time adult education courses in the Brownhills area.

**College of Continuing Education (Hawbush Centre)**  
Tel: 01922 654510

Services: Information & advice on courses for students with learning disabilities and other adult education provision.

**Darlaston Library**  
Tel: 0121 526 4530

Services: Information on education & training opportunities in the local area.

**E.S.O.L (English for Speakers of other Languages)**  
Tel: 01922 721421

Services: Specialist information & advice about courses for speakers of other languages (ESOL) & information technology including access to the internet.

**Employment Services**  
Tel: 01922 853700

Services: Information on training and work opportunities.

**First Base**  
Tel: 01922 632325

Services: Specialist information and advice for young people aged 16-25 on training and other issues including homelessness.

**Link Transactions**  
Tel: 01922 657076

Services: Information & advice on disability issues and benefits, also referrals to other agencies.

**Linkway Community College**  
Tel: 01922 721747

Services: Information on adult Education Courses

**Nova Training**  
Tel: 01902 366278

Services: Information and advice about NVQ's and other qualifications in the local area.

**Prospects Careers Service**  
Tel: 01922 636333

Services: Information advice & guidance on a wide range of occupational and educational opportunities.

**Service Users Council**  
Tel: 01922 644983

Services: An independent organisation representing users of Health & Social Care agencies offering information, support & advice.

**Steps to Work**  
Tel: 01922 627555

Services: Information and advice in CV writing, job search and training including NVQ's.

**Walsall College of Art & Technology**  
Tel: 01922 657000

Services: Information, advice & guidance in relation to a full range of education & training opportunities & career progression.

**Walsall Deaf People's Centre**  
Tel: 01922 614794

Services: Specialist course information about British Sign Language, Deafblind communication & Deaf awareness training.

**Walsall Reference Library**  
Tel: 01922 653110

Services: Information & advice on education & training opportunities

**Walsall Women's Centre**  
Tel: 01922 644006

Services: Information and advice on a range of education and training opportunities. Advice and guidance interviews available by appointment.

**Write to Learn**  
Tel: 01922 721233

Services: Specialist information and advice about courses in Literacy, Numeracy & Information Technology

For more information about the Network, contact the IAG co.ordinator, Diane Downes on 01922 424242



Walsall Lifelong Learning Alliance



# supporters' club news



## HAPPY NEW YEAR

To all supporters attending this afternoon's game we would like to extend our wishes for a happy and prosperous New Year. The Saddlers Club will be open until 3.00pm this afternoon and from 5.00pm until 11.30pm this evening.

## THE SADDLERS CLUB AGM

Before the meeting opened a silence was observed in memory of the late Bernard Johnston and other club members who have passed away during 2000. Bernard was associated with the club for 40 years and his presence was sadly missed.

- **Accounts** – A surplus of over £14,000 was reported with £52,000 spent on Lounge refurbishment. The treasurer, Mr. D. Houghton, was able to report that the year had shown a surplus for the fifth consecutive year.
- **Elections** – Brian Instone was elected unopposed as Chairman of The Saddlers Club. Colin Bramley was elected unopposed as Secretary.
- **Committee Members Elected** – Barrie O'Brien, Donald Martin, Maureen Rosewarne, Kath Loynes, John Hutton and Ernie Cooper (re-elected). Congratulations to the new members joining the committee. Thank you for your committed interest in The Saddlers Club and their efforts on behalf of members.
- **Presentation to Brian Harper** – Brian has sold Pools tickets at The Saddlers Club for over 30 years.
- **Comments** – A. O'Hare (President): "A very good performance from the club over the year when many social clubs are finding difficulties." B. Instone (Chairman): "The Saddlers Club is the best

in the area and the relationship with Walsall FC is the best for many years. The Saddlers Club has an excellent name in the football world and it is important for all to strive to maintain this reputation."

## PANTOMIME TIME AT THE SADDLERS CLUB

It's pantomime time in The Saddlers Club tomorrow evening as The Cuddly Crew Theatre Co. present Mother Goose. A great nights entertainment is in store for all of the family with admission for kids just a quid and adults £3.00p.

## SADDLERS CLUB MEMBERSHIP RENEWALS

These are now available, with fees for 2001 pegged at last year's prices. Renewals are £5.00p, with senior citizens at £2.50p each. New members joining this year will be £8.00p each.

## AWAY TRAVEL

January is Varsity month for Walsall FC with visits to both Oxford and Cambridge. As ever, The Supporters Club will be running coaches to the games, the details are as follows:

Saturday, January 13th – Oxford United – Fare: £8.75p.

Saturday, January 27th – Cambridge United – Fare: £9.50p.

Bookings can be made today at The Travel Office, situated at the rear corner of The Saddlers Club. We are open from 1.15pm until 2.45pm and also after the match.

*Royston Randle / Bob Sadler*

## female VOICE Bianca Middleton

The first lady of Walsall Football Club has her say....

How disappointing it was to lose another away game recently, particularly when we were beaten by one of our main promotion rivals, Millwall. We are not scoring enough on our travels and need to improve quickly if we are to stay up with the leading pack. It's very tight at the top of Division Two and the leadership is beginning to change hands quite regularly. What we don't want is either Millwall or Wigan Athletic to pull away and make it difficult to catch them.

Millwall manager, Mark McGhee said some nice things about The Saddlers, but we still travelled back home empty handed. It's a good job we have won most of our matches here at Bescot and we need that to continue. However, if you don't take your chances you don't win, it's as simple as that. Even though this afternoon's visitors Swindon are struggling at the wrong end of the table it will be a difficult one for us. Christmas is a very

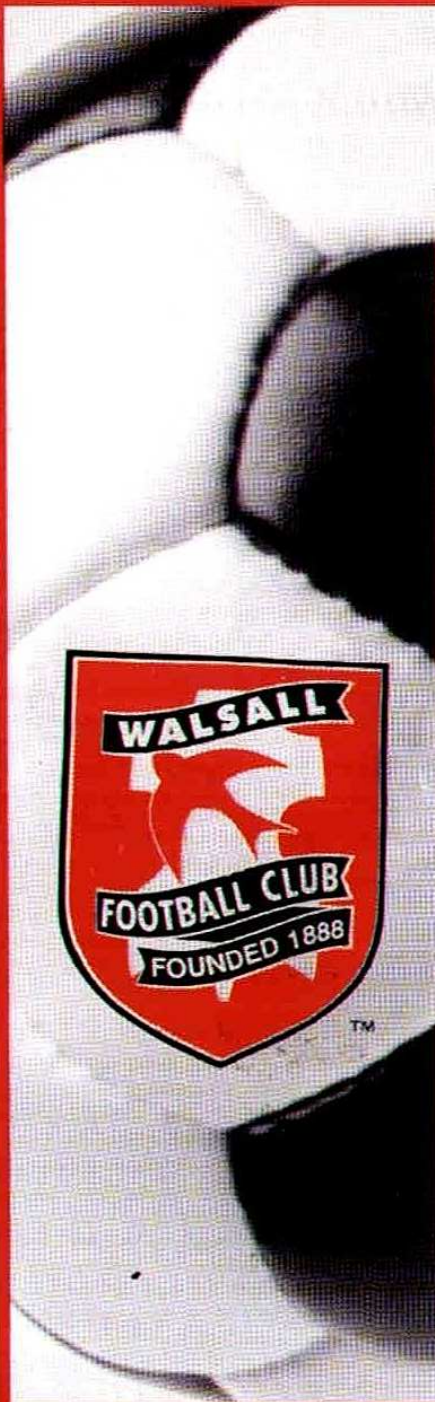
busy time for footballers as we all know only too well with games coming thick and fast. The Robins were relegated alongside us last season and it often happens that a club struggles following relegation. Most people will be expecting us to pick up three points, so let's hope that at the final whistle we have our first three points of 2001 safely in the bag.

The lads will be very keen to perform well so they don't lose their place in the side against Harry Redknapp's West Ham United on Saturday. That should be a very exciting Cup-tie – and one which I feel we are very capable of

winning. We are due a bit of giant-killing and Saturday may just be our day.... Let's hope so! Happy New Year – particularly for The Saddlers!

## CALLING ALL FEMALE SADDLERS!

If you want to share your views with our Bianca on this page why not drop us a line at Female Voice, the Walsall FC Matchday Programme, Bescot Stadium, Bescot Crescent, Walsall WS1 4SA. Alternatively you can fax us on 01922-723 922. We will look forward to hearing from you....



TREATING  
SADDLERS  
SUPPORTERS  
AS A  
SPECIAL CASE

**Are you paying too  
much for your mortgage?**

**Saddlers supporters can  
find out by taking the  
Lambeth Mortgage Challenge.**

Lambeth Building Society thinks that Saddlers supporters should be a special case. So, if you've got your mortgage with another provider, you could be paying more than you need every month.

Take the Lambeth Mortgage Challenge – it costs nothing but could save you thousands of pounds over the course of your mortgage.

All you have to do is call us on 0845 6001888 and we'll

do the rest. Either way, you have nothing to lose and everything to gain.

**PLUS**, as a Saddlers supporter we will give you a further 0.25% off most products for the first year.

**PLUS**, when you take up the Challenge you'll automatically get a holiday voucher to the value of £100 or 12% discount off the brochure price, whichever is the greater.

To take the challenge by phone or for more information please call

**0845 6001888**

**TWO TEAMS, ONE GOAL.**



**Lambeth**  
BUILDING SOCIETY

YOUR HOME IS AT RISK IF YOU DO NOT KEEP UP PAYMENTS ON A MORTGAGE OR OTHER LOANS SECURED ON IT

WFC/DEC20



# today's the day

New Year celebrations are a relatively recent innovation in England, but football fixtures have been played on January 1st since the last decade of the 19th Century and the first match took place in 1889 when we were in our first season as Walsall Football Club. We were then part of the Midland Alliance and defeated West Manchester 3-1, with the goals being scored by George Cope and two legendary names from our past, Sammy Holmes and 'Shiner' Shaw.

Sammy was still playing seven years later when we lost 5-1 at Barnsley St. Peters in the Midland League and our election to Division Two again resulted in defeat when Newcastle beat us 2-1 in 1898. Johnny Johnston scored the goal in just his second and final appearance for the club. Our Birmingham League days failed to improve on this poor record and as members of the third division in 1924 we crashed 3-1 at Ashington with Tommy Bowen scoring one of his last goals before linking up with Wolves the following month. He was replaced the following season by another man with Wolves connections, Frank Burrill who scored in our defeat by the same scoreline at Hartlepool on the first day of 1925.

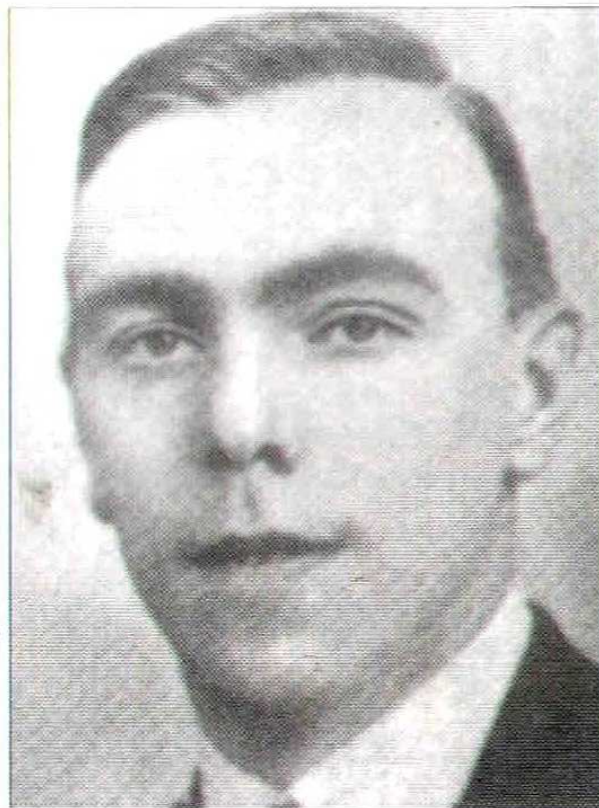
A goalless draw with Torquay United in 1938 at least bucked the

trend and on New Years Day 1944 we gained our first win for over half a century by beating Coventry City in a War-time fixture. George Dudley, whose brother Jimmy would later play for The Saddlers, scored all the goals in a 3-0 win.

Our most recent win was in 1994 as Wycombe Wanderers were dispatched 4-2 at Bescot in front of a crowd of over 6,000. Rod McDonald, Chris Marsh, Kyle Lightbourne and Jason Lillis all

appeared on the scoresheet in a thoroughly entertaining match. Other wins have been gained against York City (3-1 in 1986), Doncaster Rovers (1983) and Rochdale (1974). The latter two games were both won by a single goal, with an unfortunate own goal winning the day at Rochdale in front of a bleak crowd of 2,117 at Spotland. Most of our 12 defeats have been quite decisive and the heaviest include 5-1 at Torquay in 1949 and 4-0 at Gillingham and Brentford in 1987 and 1990 respectively.

On this day in history, Samuel Pepys began his famous diary in 1660, Britain Nationalised the coal industry in 1947 and Fidel Castro overthrew the Batista regime in Cuba. In the world of football, nets were used in a match for the first time at Bolton in 1890 and Stanley Matthews – 'the wizard of dribble' – became the first footballing knight in 1965. The Beatles were also turned down by Decca Records on January 1st 1962 which is a lesson to us all – if at first you don't succeed then try try again!



*Frank Burrill – notched our very first goal of 1925.*

Ian Crichton.

# January 1st

95.6FM **B B C** WM

3rd, 2nd, 1st Division - Always there

**SUPER**  
**SADDLERS**

Every Match Home and Away!

**B B C** WM 95.6FM

Bescot Stadium off Junction 9, M6

**Walsall F.C.**  
**GIANT**

**SUNDAY MARKET**

**OVER 200 STALLS**

- Delicious Food • Meat Auctions
  - Kiddies Roundabout • FREE Car Parks • Toilets/ Telephones
- Traditional Family Fun Shopping Every Sunday 9am - 4pm*  
Enquiries call LSD Promotions - 01922 638 866  
Bescot Stadium off Junction 9, M6

# sponsor a saddler



1. James Walker  
9/7/73, 5'11", 13.5  
W&S Electrical (Walsall) Co. Ltd.  
Tel: 01543 683 172

14. Jorge Leitao  
14/1/74, 5'11", 13.5  
J.D. Distribution Ltd  
Distribution Services 01902 604 431

2. Chris Marsh  
14/1/70, 5'11", 13.2  
Adrian Wilcox Motor Bodies Ltd.  
Pleck Road, Walsall. Tel: 01922-703 000

15. Ziger Aranalde  
28/2/73, 6'1", 13.2  
Walsall Football  
Supporters Club - 01922 633357

3. Ian Brightwell  
9/4/68, 5'10", 12.5  
Walsall Carpets, Freer Street,  
Walsall 01922 622547

17. Carl Emberson  
13/7/73, 6'2", 14.7  
Beasley Johnson Loyns  
Solicitors - 01922 644433

4. Tom Bennett  
12/12/69, 5'11", 11.8  
R.A. Bennett Ltd (Rabtherm),  
Aldridge

19. Paul Hall  
3/7/72, 5'9", 11.0  
Middleton Fish & Chips

Roy Graydon  
The Red Cow, Allens Lane,  
Pelsall

5. Andy Tillson  
30/6/66, 6'2", 12.10  
Tinkers GMBH

20. Gary Birch  
8/10/81, 6'0", 12.3  
Steve Preston

6. Ian Roger  
20/6/77, 6'3", 14.0  
The New Fullbrook  
Public House

21. Matthew Gadsby  
6/9/79, 6'1", 11.12  
Roscrea Hotel, Blackpool.  
Tel: 01253-624 747

7. Darren Wrack  
5/5/76, 5'9", 12.2  
Buds 'n' Spuds - Tel: 01922-  
622 443

24. Dion Scott  
24/12/80, 5'11", 11.0  
Able Cutting Services Ltd  
(Wednesbury) 0121 5052829

8. Darren Byfield  
29/9/76, 5'11", 11.11  
Quality Hotel & Suites.  
J10 - M6. Tel: 01922-724 444

25. Tony Barros  
29/3/71, 6'0", 13.0  
Quality Boundary Hotel,  
Birmingham Road, Walsall 01922 633609  
Accommodation, restaurant and bars open to non residents

10. Dean Keates  
30/6/78, 5'5", 10.6  
The Junior Saddlers

26. Gabor Bukran  
16/11/75, 5'11", 12.3  
Broadway Flowers, 202 The Broadway,  
Walsall 01922 725967

11. Brett Angell  
20/8/68, 6'2", 13.10  
Jive Records

27. Pedro Matias  
11/10/73, 6'0", 12.0  
Luke Tisdale

**For Advertising  
& Sponsorship  
Call  
Roy Whalley  
on  
01922 651 400**



# SOMETHING for everyone...

Our prospectus is crammed  
full of courses for YOU!

With over 1,000 courses on offer,  
we really do have something  
for everyone!

**Tel: 01922 657000**

or visit our Website at:  
**www.walcat.ac.uk**



**WALSALL COLLEGE OF ARTS & TECHNOLOGY**

St. Paul's Street, Walsall WS1 1XN Tel: 01922 657000 Fax: 01922 657083  
e-mail: C.Kemp@walcat.ac.uk Website: <http://www.walcat.ac.uk>

Quality with Equality



Awarded for excellence



INVESTOR IN PEOPLE



Quality Standard



**Neil Rose**  
**The Advertiser's**  
**Saddlers Man!**

Tel: 01922 721111  
Fax: 01922 649472  
Bradford House  
27 Bradford Street  
Walsall, West Midlands  
WS1 1PN

# *Follow the super Saddlers every week in the*

# **WALSALL** **Advertiser**

***"Always top of the  
table for local sport"***

# away we go

OPPONENTS: Oxford United

DATE: 13/1/01

KICK-OFF: 3.00pm

VENUE: The Manor Ground, Oxford

DIRECTIONS: Exit M40 at junction nine, taking third exit at roundabout (signposted Oxford, Newbury A34). After six miles exit the A34 at the Peartree Interchange (signposted Oxford, Evesham A44). Take first exit at roundabout onto Woodstock Road dual carriageway. After 0.4 miles take second exit at the Wolvercote Roundabout (signposted Ring Road, London A40) on to the A40 Northern By-Pass. At Headington Roundabout after four miles, turn right (signposted City Centre) on to the A420 London Road. The ground is situated on the right-hand side after 0.8 miles.



ADMISSION: £15.50p (adults), £10.00p (concessions) for the seats and £12.50p (adults), £7.00p (concessions) for the terrace.

COACH FARE: £10.50p per person

DEPARTURE TIMES: 12.00noon from Bescot Stadium and 12.05pm from Bridgeman Street

OPPONENTS: Cambridge United

DATE: 27/1/01

KICK-OFF: 3.00pm

VENUE: Abbey Stadium, Cambridge

DIRECTIONS: Exit A1 on to A14 (signposted London E, M11, Huntingdon, Cambridge A14). After 17 miles keep in the left lane as the road divides (signposted Cambridge A1307, Newmarket, Felixstowe A14). After 0.7 miles the road will divide again, stay in left lane (signposted Newmarket, Felixstowe, Harwich A14). The A14 then becomes the Cambridge Northern By-Pass, after 4.6 miles exit at signpost for Cambridge B1047. At T-junction turn right (signposted Fen Ditton, Cambridge Airport) and head straight over roundabout by Racehorse Pub (signposted Ring Road, City Centre) into Newmarket Road where the ground will soon be visible on the left.



ADMISSION: £12.00p (adults), £7.00p (concessions) for the seats and £10.00p (adults), £7.00p (concessions) for the terrace.

\*Coach details to be announced shortly....

In the event of a replay being required for our FA Cup third round tie against West Ham United, it will take place at Upton Park on Wednesday, January 17th 2001 (kick-off 7.45pm).

Further details will be given on Walsall ClubCall - 09068-555 800 and the Official Walsall FC Web-site - www.saddlers.co.uk

There is some good news for all Saddlers fans who travel to Bescot Stadium by bus on Saturday's. Travel West Midlands' 405 service has been increased to operate every 15 minutes during Monday to Saturday daytime, with the evening and Sunday frequency remaining at every 30 minutes. The route will serve Walsall Bradford Place, Yew Tree and West Bromwich.

Premierimage.co.uk

THE SOCCER STUFF & NONSENSE STORE

Aerial & Fisheye photos of  
all British Stadiums...  
Paintings... Cakes...  
Mousemats... Jigsaws...  
Garden Kit Gnomes...  
House nameplates...  
& much much more

For a FREE gift catalogue

Call: 0208 461 4214

or write to: Unit 12  
157-159 Boundfield Rd  
London SE6 1PE



# the season so far

## ROLL CALL 2000/2001

	1st	1G	1A	CG
James Walker	20 (1)	0	6	0
Chris Marsa	2 (2)	0	0 (1)	0
Ian Brightwell	21 (1)	0	6	0
Tom Bennett	17 (3)	1	2 (1)	0
Andy Tilvan	23	0	6	2
Ian Roper	6 (3)	0	1 (1)	0
Darren Wrack	6 (8)	3	1 (1)	0
Darren Byfield	16 (7)	6	4 (2)	1
Andy Barreiros	0	0	0	0
Dean Keates	8 (6)	3	4 (1)	0
Brett Angell	11 (12)	8	2 (3)	0
Ronnie Ekstrand	0 (3)	0	0 (1)	0
Jorge Leitao	18 (5)	8	6	3
Zigao Aranalde	23	0	6	0
Saggi Eypalsson	0	0	0 (1)	0
Carl Emberson	3	0	0	0
Mark Wright	0 (3)	0	0 (1)	0
Paul Hall	20 (2)	3	5	1
Gary Birch	0	0	0	0
Matthew Gadsby	0 (1)	0	0	0
Albie Carter	0 (1)	0	0	0
Duan Scott	0	0	0	0
Tony Barros	17 (1)	0	5	1
Gabor Bakman	21 (1)	7	6	0
Pedro Matos	20 (3)	5	5	1

## Nationwide League Division Two As at 27/12/00

	P	W	D	L	F	A	W	D	L	F	A	Pts
Millwall	23	8	1	2	26	6	7	2	3	27	15	48
WALSALL	23	9	3	0	28	10	4	2	5	18	15	44
Rotherham United	23	6	3	3	23	15	7	2	7	16	11	44
Wigan Athletic	23	9	2	0	17	7	2	8	2	14	13	43
Reading	22	9	1	1	36	10	3	2	6	12	18	39
Bristol City	23	5	3	4	24	15	5	4	2	13	8	37
Stoke City	22	5	2	3	16	10	5	5	2	20	15	37
Northampton Town	22	4	3	3	12	11	6	1	5	14	14	34
Wycombe Wanderers	23	7	1	3	18	12	2	5	5	10	10	33
Wrexham	23	5	2	5	13	15	4	3	4	20	20	32
Notts County	22	4	3	3	16	15	5	1	6	9	18	31
Colchester United	23	5	3	4	14	12	3	3	5	11	17	30
Brentford	21	4	5	2	13	16	3	4	3	13	17	30
Bournemouth	22	3	4	4	12	10	4	3	4	22	17	28
Cambridge United	23	5	4	3	20	13	2	3	6	12	21	28
Peterborough United	23	6	2	3	17	12	2	2	8	10	19	28
Bury	22	5	3	3	12	13	3	1	7	9	17	28
Oldham Athletic	22	5	2	4	15	14	2	4	5	11	20	27
Bristol Rovers	22	0	6	4	8	15	5	3	4	20	13	24
Swindon Town	23	3	4	5	16	23	3	1	7	7	19	23
Swansea City	22	3	4	4	12	11	2	3	6	11	19	22
Port Vale	21	4	4	4	18	12	1	1	7	4	17	20
Luton Town	22	3	1	7	12	20	1	5	5	12	22	18
Oxford United	23	2	2	8	11	17	1	0	10	14	34	11

Date	Opponents	FA	Att.	Vis. Att.	Position	Referee
Sat 12/8/00	Rotherham United (away)	3-2	5,423	1,353	4	M. Jones
Sat 19/8/00	<b>OLDHAM ATHLETIC</b> (home)	3-2	5,952	921	2	G. Frankland
Tues 22/8/00	<b>KIDDERMINSTER HARRIERS</b> (home) LC1:1	1-1	5,552	741	-	T. Bates
Sat 26/8/00	Swindon Town (away)	4-1	5,492	777	1	S. Tomlin
Tues 29/8/00	<b>OXFORD UNITED</b> (home)	3-2	5,678	413	1	P. Walton
Sat 2/9/00	<b>WIGAN ATHLETIC</b> (home)	2-0	7,156	1,255	1	R. Fernandez
Tues 5/9/00	Kidderminster Harriers (away) LC1:2	1-0	5,351	1,674	-	P. Dowd
Sat 9/9/00	Bury (away)	0-2	4,755	1,020	1	P. Joslin
Tues 12/9/00	Luton Town (away)	0-0	4,362	313	1	D. Elleray
Sat 16/9/00	<b>AFC BOURNEMOUTH</b> (home)	1-1	5,054	192	1	P. Richards
Tue 19/9/00	<b>WEST HAM</b> (home) LC2:1	0-1	5,435	606	-	S. Lodge
Sat 23/9/00	Wrexham (away)	1-0	3,766	838	1	M. Pike
Wed 27/9/00	West Ham (away) LC2:2	1-1	11,963	321	-	A. D'Urso
Sat 30/9/00	<b>NOTTS COUNTY</b> (home)	5-1	5,211	514	1	A. Lookie
Fri 6/10/00	Colchester United (away)	2-0	3,428	314	1	M. Halsey
Sat 14/10/00	<b>BRISTOL CITY</b> (home)	0-0	6,576	1,318	1	E. Wolstonholme
Tues 17/10/00	<b>PETERBOROUGH UNITED</b> (home)	1-1	4,716	372	1	A. Kaye
Sat 21/10/00	Wycombe Wanderers (away)	1-3	5,564	857	1	M. Messias
Tues 24/10/00	<b>STOKE CITY</b> (home)	3-0	6,996	1,914	1	M. Ryan
Sat 28/10/00	Brentford (away)	1-2	4,007	471	2	C. Wilkes
Sat 4/11/00	<b>READING</b> (home)	2-1	7,772	1,901	1	H. M. Webb
Sat 11/11/00	Bristol Rovers (away)	0-0	7,540	593	2	P. Armstrong
Sat 18/11/00	<b>EXETER CITY</b> (home) F.A. Cup:1	4-0	4,095	419	-	D. Crick
Sat 25/11/00	<b>NORTHAMPTON TOWN</b> (home)	3-0	5,894	1,246	2	G. Laws
Sat 2/12/00	<b>PORT VALE</b> (home)	2-1	5,597	615	1	M. Clattenburg
Fri 8/12/00	<b>BARNET</b> (home) F.A. Cup:2	2-1	3,699	245	-	J.P. Robinson
Sat 16/12/00	Millwall (away)	0-2	11,737	492	3	D. Pugh
Sat 23/12/00	<b>CAMBRIDGE UNITED</b> (home)	3-1	5,277	371	2	M. S. Pike
Tues 26/12/00	Swansea City (away)	1-3	5,795	562	2	A. R. Leake
Sat 30/12/00	Oldham Athletic (away)					
Mon 1/1/01	<b>SWINDON TOWN</b> (home)					
Sat 6/1/01	<b>WEST HAM UNITED</b> (home) F.A. Cup:3					
Sat 13/1/01	Oxford United (away)					
Tues 16/1/01	<b>WIGAN or OLDHAM</b> (home) LDV:1:2					
Sat 20/1/01	<b>SWANSEA CITY</b> (home)					
Tues 23/1/01	<b>ROTHERHAM UNITED</b> (home)					
Sat 27/1/01	Cambridge United (away)					
Fri 2/2/01	Wigan Athletic (away)					
Sat 10/2/01	<b>BURY</b> (home)					
Sat 17/2/01	AFC Bournemouth (away)					
Tues 20/2/01	<b>LUTON TOWN</b> (home)					
Sat 24/2/01	<b>WREXHAM</b> (home)					
Sat 3/3/01	Notts County (away)					
Tues 6/3/01	Bristol City (away)					
Sat 10/3/01	<b>COLCHESTER UNITED</b> (home)					
Sat 17/3/01	Peterborough United (away)					
Sat 24/3/01	<b>WYCOMBE WANDERERS</b> (home)					
Sat 31/3/01	<b>MILLWALL</b> (home)					
Sat 7/4/01	Port Vale (away)					
Sat 14/4/01	Stoke City (away)					
Tues 17/4/01	<b>BRENTFORD</b> (home)					
Sat 21/4/01	Reading (away)					
Sat 28/4/01	<b>BRISTOL ROVERS</b> (home)					
Sat 5/5/01	Northampton Town (away)					

## SHOW YOUR SUPPORT

Jorge Leitao is firmly establishing himself as a real Saddlers. In order to show your support, our Portuguese Man of Gold are making available some quality, 5' x 3' Portugal national flags. They cost £8.00p each and order yours by sending a cheque for the required amount to: Wigan Matchday Programme, Bescot Stadium, Bescot Crescent, Wigan, WS1 4SA. (If you require your flag to be posted out please add postage, alternatively they can be collected which is situated at the corner of Banks's Stand - please make sure you have your name on the flag.)

All matches Nationwide League Division Two unless stated. Goalscorers in CAPS. Yellow cards Red cards Substitute/plus

Walker	Brightwell	Roper	Tilson	Aranalde	Hall	Bennett	Bukran	Matias	ANGELL 2	Leitao	Wrack	Byfield	Emberson▲	Keates▲	Carter▲
Walker	Brightwell	Roper	Tilson	Aranalde	Hall	Bennett	Bukran	Matias	Angell	BYFIELD 2	Keates	WRACK 1	Leitao	Emberson▲	Carter▲
Walker	Brightwell	Roper	Tilson	Aranalde	Hall	Keates	Bukran	Wrack	LEITAO 1	Byfield	Eyjoftsson	Emberson▲	Angell▲	Matias▲	Godsby▲
Walker	Brightwell	Roper	Tilson	Aranalde	Hall	KEATES 1	Bukran	WRACK 1	BYFIELD 1	LEITAO 1	Matias	Bennett	Angell	Emberson▲	Barras▲
Walker	Brightwell	Roper	Tilson	Aranalde	HALL 1	Keates	Bukran	Wrack	Byfield	LEITAO 1	Barras	Matias	ANGELL 1	Emberson▲	Rammel▲
Walker	Brightwell	Barras	Tilson	Aranalde	Hall	KEATES 1	Bukran	Wrack	Angell	LEITAO 1	Matias	Bennett	Byfield	Emberson▲	Roper▲
Walker	Brightwell	Barras	Tilson	Aranalde	Hall	Keates	Bukran	Matias	Angell	Leitao	Bennett	BYFIELD 1	Emberson▲	Roper▲	Carter▲
Walker	Brightwell	Barras	Tilson	Aranalde	Hall	Keates	Bukran	Matias	Angell	Byfield	Leitao	Bennett	Wrack	Emberson▲	Roper▲
Walker	Brightwell	Barras	Tilson	Aranalde	Wrack	Keates	Bennett	Matias	Leitao	Byfield	Angell	Hall	Roper	Emberson▲	Bukran▲
Walker	Brightwell	Barras	Tilson	Aranalde	Hall	Keates	Bennett	Matias	ANGELL 1	Byfield	Leitao	Bukran	Godsby	Emberson▲	Roper▲
Walker	Brightwell	Barras	Tilson	Aranalde	Hall	Bukran	Keates	Matias	Leitao	Byfield	Angell	Roper▲	Bennett▲	Carter▲	Emberson▲
Walker	Brightwell	Barras	Tilson	Aranalde	Hall	Bukran	Bennett	Matias	LEITAO 1	Byfield	Carter	Angell	Keates	Emberson▲	Roper▲
Walker	Brightwell	Barras	Tilson	Aranalde	Hall	Bukran	Bennett	Matias	LEITAO 1	Angell	Roper	Byfield	Wright	Keates▲	Emberson▲
Walker	Brightwell	Barras	Tilson	Aranalde	Hall	Bukran	BENNETT 1	MATIAS 1	LEITAO 1	ANGELL 1	Wright	BYFIELD 1	Roper▲	Keates▲	Emberson▲
Walker	Brightwell	Barras	Tilson	Aranalde	Hall	Bukran	Bennett	Matias	LEITAO 1	ANGELL 1	Roper	Byfield	Keates	Emberson▲	Wright▲
Walker	Brightwell	Barras	Tilson	Aranalde	Hall	Bukran	Bennett	Matias	Leitao	Angell	Wrack	Byfield	Roper▲	Keates▲	Emberson▲
Walker	Brightwell	Barras	Tilson	Aranalde	Hall	Bukran	Bennett	MATIAS 1	Leitao	Angell	Wrack	Byfield	Roper▲	Keates▲	Emberson▲
Walker	Brightwell	Roper	Tilson	Aranalde	WRACK 1	Bukran	Bennett	Matias	Leitao	Byfield	Hall	Angell	Scott▲	Keates▲	Emberson▲
Emberson	Brightwell	Barras	Tilson	Aranalde	HALL 1	Bukran	Bennett	Matias	LEITAO 1	Byfield	Angell	Keates	Wright	Walker▲	Roper▲
Emberson	Brightwell	Barras	Tilson	Aranalde	Hall	Bukran	Bennett	Matias	Leitao	BYFIELD 1	Angell	Wright	Keates	Walker▲	Roper▲
Emberson	Brightwell	Barras	Tilson	Aranalde	Hall	Bukran	Bennett	MATIAS 1	Leitao	BYFIELD 1	Walker	Angell	Marsh	Keates▲	Roper▲
Walker	Brightwell	Barras	Tilson	Aranalde	Hall	Bukran	Bennett	Matias	Leitao	Byfield	Marsh	Angell	Keates▲	Roper▲	Emberson▲
Walker	Brightwell	BARRAS 1	Tilson	Aranalde	HALL 1	Bukran	Bennett	MATIAS 1	LEITAO 1	Byfield	Marsh	Angell	Keates	Emberson▲	Roper▲
Walker	Brightwell	Barras	Tilson	Aranalde	HALL 1	Bukran	Keates	Matias	LEITAO 1	Byfield	Marsh	Angell	Wrack	Emberson▲	Marsh▲
Walker	Brightwell	Barras	Tilson	Aranalde	Hall	Bukran	KEATES 1	MATIAS 1	Leitao	Byfield	Angell	Ekaland	Wrack	Roper▲	Marsh▲
Walker	Brightwell	Barras	TILLSON 2	Aranalde	Hall	Bukran	Keates	Matias	Leitao	Byfield	Ekaland	Angell	Wrack	Emberson▲	Marsh▲
Walker	Marsh	Barras	Tilson	Aranalde	Hall	Bukran	Bennett	Matias	Leitao	Byfield	Angell	Wrack	Ekaland	Emberson▲	Roper▲
Walker	Marsh	Barras	Tilson	Aranalde	Hall	BUKRAN 2	Bennett	MATIAS 1	Leitao	Angell	Brightwell	Byfield	Keates	Ekaland▲	Roper▲
Walker	Brightwell	Roper	Tilson	Aranalde	Wrack	Bukran	Bennett	Matias	Byfield	ANGELL 1	Ekaland	Leitao	Emberson▲	Keates▲	Godsby▲

### Y FOR JORGE!

ublishing  
hero.  
port of  
als, we  
top  
tional

you can  
heque for  
alsall FC  
ot  
Walsall  
our flag

and £2.00p to the cost, or  
picked up from The Programme Shop,  
corner of the William Sharp and  
ke all cheques payable to A. Poole.)



substituted in same colour ▲ subs not used

## Music supplied by HMV



# HMV

top dog for music·videos·games

### PROGRAMME WANTED

James Whittingham is trying to get hold of a copy of the Walsall v Birmingham City pre-season friendly matchday programme from 1997. If there is anyone out there who can help him please write to 3 Valley Walk, Felixstowe, Suffolk IP11 7TD.

### PEN-PALS WANTED

14 year-old Emmanuel Frempong of Ghana is keen to find out more about Walsall FC and would like to correspond with as many Saddlers fans as possible. You can contact him at PO Box 8061, Tema, Ghana West Africa.



THE OFFICIAL SPORTS DRINK

HAPPY NEW YEAR  
TO ALL WALSTALL FC FANS  
FROM EVERYONE AT THE SADDLER

ring Walsall ClubCall – 09068-555 800

Calls cost 60p per minute at all times

**WALSALL**  
versus  
**BARNET**

*caught*  
**live**

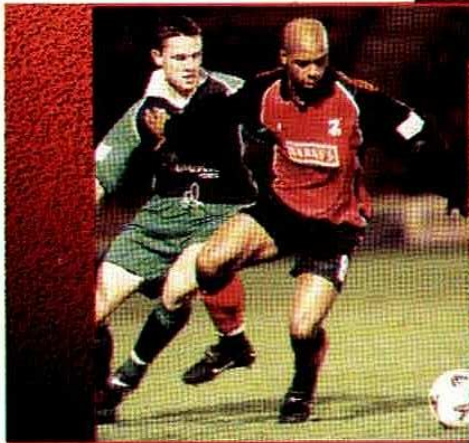
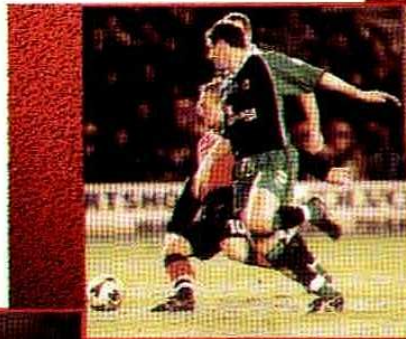


date **08/12/00**  
venue **Bescot Stadium**

final score **2-1**

FA Cup, sponsored by AXA,  
Second Round

Photographs by David Linney



tale of the turf	
2	goal
10	corners
9	shots on target
3	shots off target
0	bookings
0	sending offs

**"Assisting businesses to achieve their goals"**

**For further information contact: Mark Jones or Phil Onions**

Beneficial Buildings 28 Paradise Circus, Birmingham B1 2BJ  
Tel: 0121 608 6086, Fax 0121 608 6600

Tameway Tower Bridge Street, Walsall, WS1 1QX  
Tel: 01922 720100, Fax 01922 645775

Locally • Nationally

• Internationally

[www.bdo.co.uk](http://www.bdo.co.uk)

**BDO**  
BDO Stoy Hayward  
Chartered Accountants